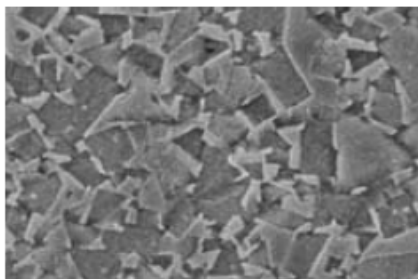
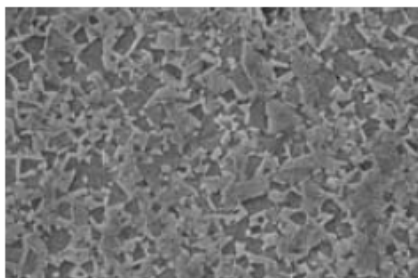


K6UF

## Premium carbide grade for special applications

*Die Premium-Hartmetallsorte  
für spezielle Anwendungen*

ISO-Classification / ISO-Bereich		K05-K10
Dia. / Durchm.	mm	1.2 – 42.2
Co	%	6.0
WC incl. doping	%	94.0
Density / Dichte	g/cm <sup>3</sup>	14.80
HV <sub>30</sub>	kg/mm <sup>2</sup>	1900
HRA	ISO3738	93.6
K <sub>1c</sub>	MNm <sup>-3/2</sup>	9.3
Bending strength / Biegefestigkeit	N/mm <sup>2</sup>	3900
Porosity / Porosität	A	< 02
	B	00
	C	00
WC grain size / WC-Korngröße	µm	0.6



### Applications:

- composite materials (e.g. CFRP)
- graphite
- hardened steels
- grey cast iron

### Anwendungen:

- Verbundwerkstoffe (z.B. CFK)
- Graphit
- gehärtete Stähle
- Gusswerkstoffe