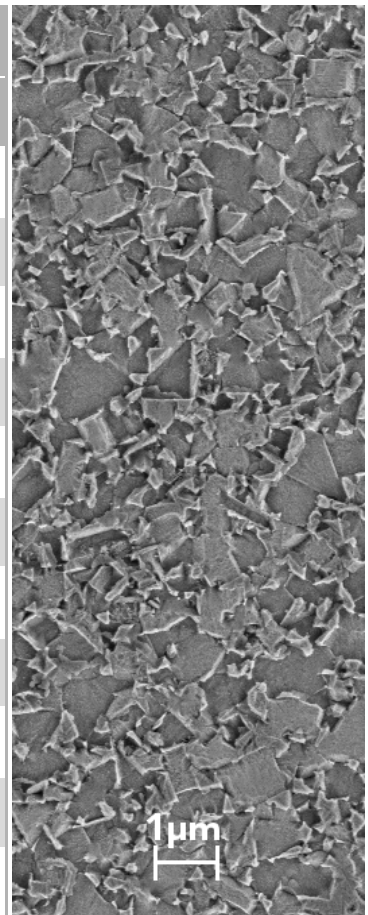


| | | |
|--|------------------------|-----------|
| Grade Sorte | K-6UF | |
| ISO -Classification ISO -Bereich | K05-K10 | |
| Co | % | 6.0 |
| WC incl. doping WC inkl. Dotierung | % | 94.0 |
| Density Dichte | g/cm ³ | 14.80 |
| Hardness HV ₃₀ Härte HV ₃₀ | kg/mm ² | 1870 ± 50 |
| HRA | ISO3738 | 93.4 |
| Fracture toughness K _{1C} Bruchzähigkeit K _{1C} | MPa · m ^{1/2} | 9.3 |
| Transverse Rupture Strength Biegebruchfestigkeit | N/mm ² | 3900 |
| Porosity Porosität | A | < 02 |
| | B | 00 |
| | C | 00 |
| Average grain size Mittlere Korngröße | µm | 0.65 |



Applications | Anwendungen

Drilling | Bohren
End Milling | Fräsen
Reaming | Reiben

- ✓ high-alloyed steels | hochlegierte Stähle
- ✓ stainless steels - austenitic | Edelstähle - Austenitisch
- ✓ stainless steels - ferritic & martensitic | Edelstähle - Ferritisch & Martensitisch
- ✓ superalloys (based on Fe/Ni/Co/Ti) | Superlegierungen (auf Fe-/Ni-/Co-/Ti-Basis)
- ✓ hardened metals (white/chilled cast iron) | gehärtete Metalle (weißes/gehärtetes Gusseisen)
- ✓ GFRP | GFK
- ✓ CFRP | CFK
- ✓ composite materials | Verbundwerkstoffe
- ✓ graphite | Graphit